

# NEWSLETTER



Baikoen Bonsai Kenkyukai

Lindsay Shiba

Bonsai Display

Thursday, October 20, 2022, 7:00pm

Camellia Room

Temporary New Location

Live Oak Park Community Center

10144 Bogue St

Temple City, CA 91780

Please bring something for the raffle

## Officers

Joe Galgoul

President & Program Chair  
(626) 429-0325

Lindsay Shiba

Vice President,  
Show chairman  
(909) 806-0937

Charlene Quan

Treasurer  
charlenequan@sbcglobal.net

Mary Morrissey

Board Member  
(626) 705-3273

Greg Kathol

Benefit Drawing and  
Membership  
baikoenmembership@gmail.com

Jeo Duran

Refreshment Chair  
(909) 277-3867

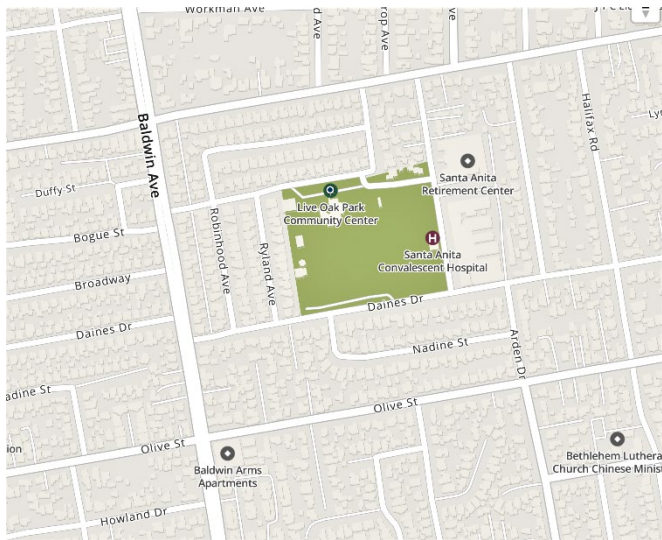
Shirley Quan

Secretary/Newsletter  
shirley\_quan@sbcglobal.net

Tom Lau

Social Media  
halfclueless@yahoo.com

## Temporary New Meeting and Show Location



The Arboretum is undergoing remodeling of the main entrance, forcing us to find a new meeting and show location. We found a new meeting room and a room for our January show down the street off Baldwin at Live Oak Park at the Community Center. We will meet in the Camellia Room in October and November and will have our show in the Live Oak room at the Community Center. The January meeting is scheduled to be back at the Arboretum, but in Ayres Hall. The entrance will be at the driveway next to the Hall. If there are any changes, I will let you know as soon as I know.

## October Demonstrator ~ Lindsay Shiba, October 20, 2022



We welcome Lindsay to demystify the different parts, meaning and symbolism of a bonsai display. Lindsay is the Show Chair of Baikoen and the California Bonsai Society and as you can tell from the photo on the left, he can explain all the subtle nuances and meaning of a bonsai display, in an entertaining and informative way that everyone can understand and enjoy. This will be an interesting evening.

If there is time, we may also discuss plans for the January show. The show will be at the Live Oak Community Center. We need volunteers for the reception (food), show setup and tear down, show monitors, runners for the auction and raffle and help with sales.

## September Demonstrator- Jack Reynolds



Jack Reynolds is a retired teacher. He presented an informative demonstration that was more geared to his philosophy of bonsai rather than techniques of bonsai. It was a very insightful evening and to make you think.

The meeting was filmed by Tom but was not live. It will appear later as one of the weekly videos.







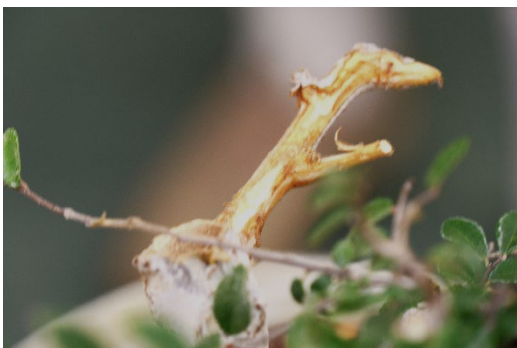
One of the things that gives you the feeling of age, is the degree of twiginess and the presence of deadwood on the tree. This Zelkova above and to the right, was started as a root cutting. The

darkness in the bottom half of the trunk is originally the root, and if you look closely (just at the top of the tag) is the point where the stem meets/joins the root. It looks like a round object (the stem) is inserted into a slightly larger round object (the root), area outlined in red.

The growth of moss gives the feeling of age to the stem, as well as the darker color. But the color is also an indication of where the tree has grown. Deadwood at lower elevation (3-5000 feet) is usually darker than deadwood grown at higher elevations. The most authentic color for deadwood is gray.



One of the things that Jack said was to create something interesting. So, this is what he did with this other elm. He didn't want the breaking point (here he spaces his fingers above) to compete with the crown and he



didn't want to jin it. So, he cut it off then hollowed out the stem with his Dremel and created a jin (which he thought might be cut off later).

Some thoughts from Jack Reynolds.

"Bonsai is an art, and it doesn't have to follow bonsai guidelines." A teacher will teach basic guidelines for traditional methods from Japan. For your trees, bend/break the rules in the name of art. Your artistic taste/decisions are your choice. If you like the results, others may not. We are the custodians of the trees at the present time, trees that may be passed onto others in the future.

Need to think of other classic species for use in bonsai. California is the center of evolution of oaks.



There are 20 species of oaks in California and even more hybrids. Start by collecting acorns and growing trees from the seeds. Try not to go out to collect plants, the after care is hard. Start by trying new species. In California we can grow things that other people are not able because of the climate. Expand your experience, you are not limited to only making traditional/classic bonsai trees. It is important to have a tree that grabs your

interest, to make a statement, a social statement even. Bonsai needs to ease outside of Japan traditions. Bonsai doesn't have to be traditional, but it should be interesting. Bonsai classical is traditional, but we need to go beyond, make it jazzy.

"We don't make natural trees, we make bonsai."

Below is the other tree that he brought in to demonstrate the possibilities of doing non-traditional things.





Above, and right, he has hallowed out branches that had been cut off. Look at the different look of the healed over spaces.

Greg was the happy winner of the Zelkova. Thank you very much Jack for encouraging us to explore new things and approaches to bonsai and to never forget that Bonsai should be fun and interesting!



Membership.Dues

We will start collecting membership for 2023 dues in December. Because of higher expenses, we made the hard decision to increase membership dues to \$30 for single membership and an additional \$5 for each family member.

### Cookie / Snack sign-up for the March meeting.

Refreshments by Bill Ward, Jackie Zinder and Marren Padrones. Thank you for signing up.

## Announcements

**November 5, 2022. Start date of Lindsay's monthly workshops at his home from 10am to**

**12 noon.** Bring your own tree. Four (4) consecutive workshops for \$50 per person (this is a real bargain!) for Baikoen members and \$75 for non-members. Up to 8 spaces available. Please call or text him at 909-806-0937 if you have questions or to reserve a spot.

October 1 & 2, 2022, Chino Bonsai Club 2<sup>nd</sup> Annual Bonsai Exhibit. 261 S. Junipero Serro Dr., San Gabriel, 9am-5pm. Bonsai styling and sales. Free. For additional information please contact David Nguy 323-482-6188 or Jerry Garcia 909-270-7776.

October 5-9, 2022, Kofu Bonsai Kai show at the Bowers Museum, 2002 North Main Street, Santa Ana, CA 92706, 10am-4pm.

October 7 & 8, 2022, Conejo Valley Bonsai Society 19<sup>th</sup> Annual Exhibition, Gardens of the World, 2001 Thousand Oaks Boulevard, Thousand Oaks, CA 91362, 9am to 5pm. For more information, please contact Marj Branson, [president@cvbs-bonsai.org](mailto:president@cvbs-bonsai.org)

October 8 & 9, 2022 Santa Nella, California, GSBF Bonsai Rendezvous 2022: Annual GSBF event held at Hotel Mission de Oro, 13070 S. Highway 33, Santa Nella, CA 95322. Free and open to the public. 30+ vendors from northern and southern California as well as several out of state vendors will be on hand both days. Admission is free, donations are appreciated. Free demonstrations throughout the days. Bring-your-own bonsai work area. Mel Ikeda and his tomodachi group will demonstrate the art of creating bonsai amongst friends. Silent auctions of bonsai trees and related material will be held both days. Consignment silent auction sells opportunities are available. Rendezvous hotel room rate \$155 two-night minimum. For more information contact Rich Guillen at [richguillen@att.net](mailto:richguillen@att.net) or (831) [348-5015](tel:348-5015).

November 5, 2022, 14<sup>th</sup> Annual Fresno Bonsai Society Yard Sale, 945 Clovis Ave., Clovis, CA 93611, 9:00 AM – 1:00 PM, Huge Silent Auction with trees from the Clark Bonsai Collection and from private collections.

November 12-13, 2022. Pacific Bonsai Expo, The Bridge Yard, Oakland, California, The Pacific Bonsai Expo is a juried exhibition featuring 70 outstanding bonsai displays and a selection of the community's top vendors. Jurors Bjorn Bjorholm, Ryan Neil, and William N. Valavanis will select the trees. Tickets available for sale now at the web site. For more information, [www.pacificbonsaiexpo.com](http://www.pacificbonsaiexpo.com).

November 27, 2022, CBS Annual Member's sale. Yamaguchi Bonsai Nursery, 1905 Sawtelle Blvd., West Los Angeles, CA 90025, 9am – 1pm. [www.californiabonsaisociety.com](http://www.californiabonsaisociety.com) for more information.

January 21 & 22, 2023, Baikoen Bonsai Kenkyukai 59<sup>th</sup> Winter Silhouette Show and Sale, Temple City Live Oak Park Community Center, Live Oak Room, 10144 Bogue St., Temple City, CA 91780, 10am to 4:30pm. Temporary new location for the show. Sales and demonstration at 1pm on both days. Deciduous bonsai are featured from club members and invited guests. The Nagata-Komai award will be presented, and there will be a demonstrator at 1pm on both days. There will be a sales area with club and vendor plants, pots, tools and more. For more information, please visit [www.baikoenbonsai.com](http://www.baikoenbonsai.com) or email Joe Galgoul, [joegalgoul@yahoo.com](mailto:joegalgoul@yahoo.com).

Baikoen meetings will continue to be recorded live and zoomed by Tom. Here is the link to join the meeting

**<https://worldvision.zoom.us/j/6843230936>**  
**Zoom meeting**

Tom's videos: If you have missed any of the weekly videos that Tom has produced, here is the link to view all of them.

<https://www.youtube.com/channel/UC7fXUS6h9DwoBF1hagik-wA>

### 2022 Important Dates

October 20, 2022	Lindsay Shiba
November 17, 2022	Caroline Scott, CBS Artist
December 2022	Happy Holidays
January 21 & 22, 2023	59 <sup>th</sup> Winter Silhouettes Show Live Oak Park, Temple City

## Baikoen Demo Schedule – 2023 Tentative

January 19, 2023	Michael Roberts*
February 16, 2023	CBS Artist
March 16, 2023	
April 20, 2023	Michael Roberts*
May 18, 2023	CBS Artist
June 22, 2023	
July 20, 2023	CBS Artist
August 17, 2023	No Meeting
September 21, 2023	Michael Roberts*
October 19, 2023	
November 16, 2023	CBS Artist
December 2023	Happy Holidays

\*More about Michael Roberts workshop series in the November newsletter