

# NEWSLETTER



## Baikoen Bonsai Kenkyukai

**Tom Vuong**  
Grafting Workshop

Thursday, March 21, 2024  
7:00pm, Bamboo Room

LA Arboretum  
301 North Baldwin Avenue  
Arcadia, CA 91007

**Please bring something for the raffle**

### Officers

#### Joe Galgoul

President & Program Chair  
(626) 429-0325  
Lindsay Shiba  
Vice President,  
Show chairman  
(909) 806-0937

#### Charlene Quan

Treasurer  
charlenequan@sbcglobal.net

#### Mary Morrissey

Board Member  
(626) 705-3273

#### Mike Kelly

Member-At-Large  
818-395-6791  
Greg & Lily Kathol  
Benefit Drawing and

#### Membership

baikoenmembership@gmail.com

#### Gus Cazares

Refreshment Chair  
(909) 277-3867

#### Shirley Quan

Secretary/Newsletter  
shirley\_quan@sbcglobal.net

#### Tom Lau

Social Media  
halfclueless@yahoo.com

## February Demonstrator – Michael Ryan Bell

[www.facebook.com/DaiIchiBonsai](http://www.facebook.com/DaiIchiBonsai)

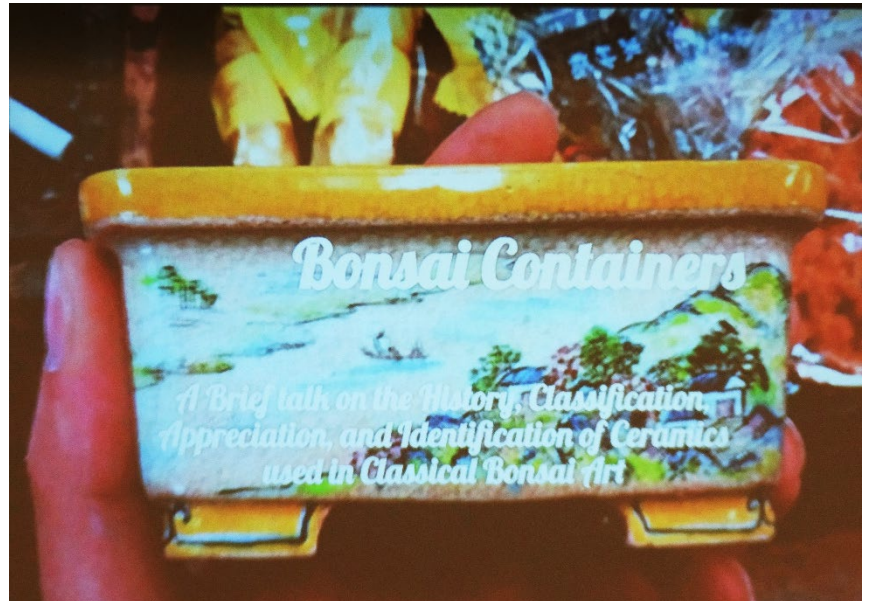
[www.facebook.com/californiabonsaisociety](http://www.facebook.com/californiabonsaisociety)

If you missed this meeting you'll have to wait for Tom's video to come out. It was unbelievable the amount of knowledge and enthusiasm that just poured out of this guy. Not only that, usually talking about a database or history is dull, but he was not dull (see the photo on the right for a picture of his antics). He had us by the seat of our pants the whole time.

Also, you can check out similar (not the same) talks he gave during the week that he was here, with meetings at Dai Ichi Bonsai and California Bonsai Society club meetings, links are above. Tom will put out his video, <https://youtu.be/woNnLbQJzik>, but content is not complete now. You can also visit his website, link below.



Here are photos of some of the slides that were shown, but I would encourage you to look at the Facebook videos to get a better understanding of this talk from a man who is acknowledged as the world's expert on bonsai containers.



Early pottery was imported from China to Japan. At that time, the age of the pottery was not important, it was more related to the cultural time so that is why the pots were classified according by name.

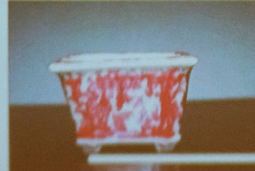
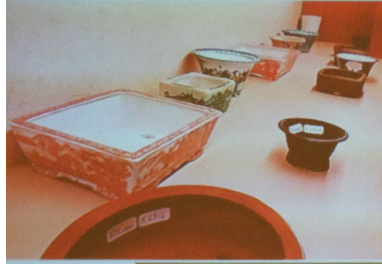
The glazes were developed to compensate for the imperfect clay, to cover the imperfect clay. Potters used what was available.

## Classification by Age



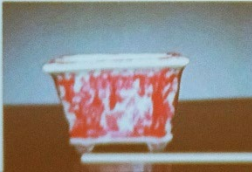
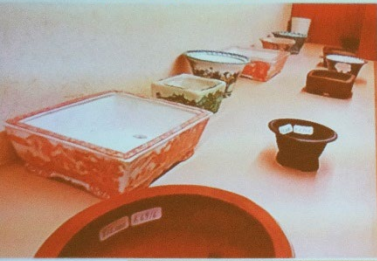
- **Kowatari**(Old Crossing)-before 1816
- **Nakawatari**(Middle Crossing)-1816-1911
- **Shinwatari**(New Crossing)-1911-1940
- **Shin-ShinWatari**(New-New)-1940-1989
- **Shinto**-Contemporary

## TOPICS



- History
- Appreciation
- Classification
- Identification
- Discernment

## TOPICS



- History
- Appreciation
- Classification
- Identification
- Discernment

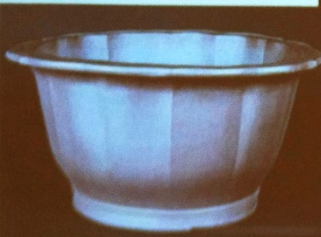
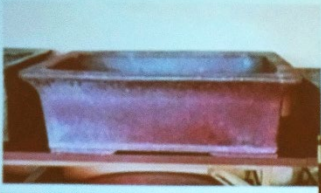
## History



Most of the containers imported to Japan from China in the earliest periods came from the Yixing region, and a much smaller portion from Canton

## Kowatari Pots

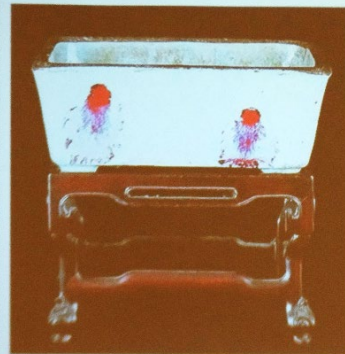
Imported into Japan before 1816. Ages range from 200 to 500 years old



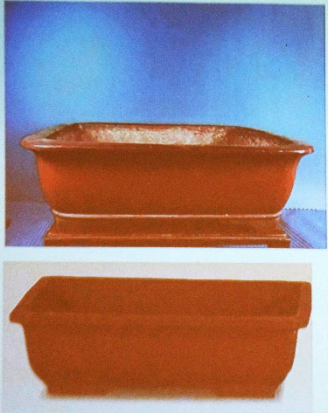
## History Of Bonsai Containers

### China

- Bonsai specific pottery, like Bonsai itself, began in China around 1400, with minimally decorated Terra Cotta Containers.
- More Modern forms of Bonsai pottery were first imported into Japan from China around the 17th century



## CONTEMPORARY TOKONAME




**TOKONAME IS NOT A SYNONYM FOR QUALITY!**

The Vast Majority of Tokoname pots are no better than anywhere else. saying something is "Tokoname" as a quality standard is meaningless.

value is not determined by region, but by artist

## Identification

<http://japanesebonsaipots.net/>



- Pattern
- Style
- Clay
- Chop

<http://www.tokoname.or.jp/bonsai/maker-e.htm>

There was too much information, and I couldn't read my handwriting. But there was one important thing that Michael Ryan Bell emphasized. Patina. It is visual age; it evokes emotion. If a tree is perfectly matched with the pot, age + dignity=perfect match, it is directly related to age, quality, and value. To develop patina, you need to apply a thin film of oil to trap microscopic pores in the clay and store the pot outside. He washes his pots with soap (2 drops) and water, every 20 days, then applies a thin layer of oil, any kind (even Pam the spray can used in baking). To remove scale (lime deposit on pots), bury the pot fully in soil for a year, the patina will remain, but the lime deposit will dissolve. Put pots under benches, and don't water with hard water (LA water is hard so this is difficult thing to avoid for us).

Any questions? Send him a message. Contact and web site are below.

## Identification: Conclusion

Gastrognome@aol.com

Facebook:  
Michael Ryan Bell



JAPANESE  
BONSAI POTS.NET





The entrance to the Banta Educational Center featured a new Bonsai-A-Thon sign, and a beautiful very old Bald Cypress at the entrance to all the Bonsai-A-Thon activities.



The 2024 Bonsai-A-Thon with head liner Young Choe, sponsored by Joshua Roth, was a much-anticipated success. The four Kusamono workshops held at Eastern Leaf, Yamaguchi, Kimura Nurseries, and at The Hunting

ton were full and participants all had fun learning this craft.

The bonsai display, by the host club, Baikoen, featured three pioneer teachers and legends: Marge Blasingame, Jim Barrett and Ted Matson. Each had a tree that they designed on display. On the right is a **Chinese Hackberry** by Marge.

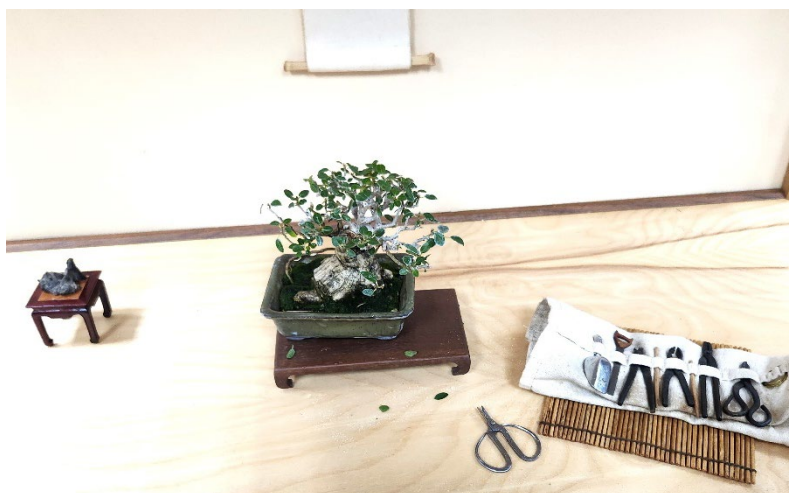




On the left is a **Hawaiian Olive** designed by Jim Barrett and growing in a Jim Barrett pot. Below is a special display by Ted Matson.



On the right is a closeup picture of this exquisite miniature tokonoma.



**March Demonstrator will be Tom Vuong.** Tom will demonstrate his grafting techniques and secrets with junipers. He will present a demonstration first, followed by a workshop for club members. This workshop is only for junipers, please do not bring other kinds of trees. Please limit yourself to two (2) trees for Tom to graft.

## **Announcements**

**Time to renew yearly membership dues.** If you joined in November or December of 2023, your membership is good through 2024. Last day to renew membership is March 31, 2024, when I delete members from the newsletter mail distribution list whom have not paid for 2024. If you don't know if you need to renew membership, please ask.

Please welcome new member Mark Szatkowski.

**Thank you lunch for people that helped with the show, March 9, 2024, 12 noon. Villa Catrina Restaurant,** 251 N. Santa Anita Ave, Arcadia, CA 91006, 626-294-1573. Please let me know, by text or email, if you plan to come. You do not need to let me know if you already signed up on the list. Shirley, phone 323-828-2162, email shirley\_quan@sbcglobal.net. Please see flyer for menu.

### **Cookie / Snack sign-up for the February meeting.**

Refreshments by Mitch Fennel, Cedric Navarro and Brent Martin. Thank you for signing up. Please remember to sign up for refreshments at the next meeting especially if you partake in refreshments.

**April 13 & 14, 2024, American Bonsai Association, Sacramento's Annual Show**, 10am to 4pm, 3330 McKinley Blvd, Sacramento, CA 95816. Headliner, TYLER SHERROD, Professional Bonsai Artist/Teacher from Georgia, will conduct a live demonstration each day at 1:30PM • A large EXHIBIT of beautiful bonsai developed by our members • Northern California VENDORS selling all things bonsai. For more information, [www.abasbonsai.org](http://www.abasbonsai.org) or phone: (+1) 916-799-9575

**April 27 & 28, 2024. San Diego Spring Show, 2024 Spring Show**, Saturday and Sunday, 10am to 5pm on Saturday, and 10am to 4pm on Sunday. Casa del Prado, Room 101, tree display and sales. Banquet, raffle and auction 5:30-8pm. Baikoen will hire a bus or van depending on the number of people that sign up to go. Cost is \$20. Leaving the Arboretum South parking lot at 2pm and returning about 11pm. Please bring a dessert for the banquet. Please sign up for the trip at the March meeting so we can make arrangements for transportation. Sorry, no refunds.

**May 4 & 5, 2024, Chino Bonsai Club, 4<sup>th</sup> Annual Bonsai Exhibit**, 261 S. Junipero Serra Dr., San Gabriel, CA. Open May 4<sup>th</sup> 9am to 5pm, May 5<sup>th</sup> 9am to 3:30pm. Please see the flyer.

**June 9, 2024, LA Bonsai Swap Meet, 10am to 12pm**, Woodley Park, 6076 Woodley Avenue, Van Nuys (South end of parking lot). Enjoy a day of shopping, swapping, or selling bonsai, tools, and pots. Everyone is welcome to this free event. We welcome newcomers. For more information, email [minguseyes@gmail.com](mailto:minguseyes@gmail.com) or join us on Facebook at LA Community Bonsai Swap Meet Group.

**October 26-27, 2024, An Exhibition of Extraordinary Bonsai, Pacific Bonsai Expo**, [Henry J. Kaiser](#)

If you are planning to submit one or more of your trees for consideration, the submission period will run from February 1st through April 30th. The members of the jury will determine which trees will be accepted for display at the exhibit. For more information, please visit <https://pacificbonsaiexpo.org/>.

**New ZOOM Link.** Baikoen meetings will continue to be recorded live and zoomed by Tom. Here is a new link. We will be streaming our meetings live to anybody. However, it is not interactive, as we encourage people to either watch the recording on YouTube or join us in person.

<https://us06web.zoom.us/j/8328571089?pwd=1Fqg0SeV9vFT5RaF5vf3pyeVUAIYoE.1>

**Tom's videos:** If you have missed any of the videos that Tom has produced, here is the link to view all of them. [https://www.youtube.com/results?search\\_query=baikoen+bonsai+club](https://www.youtube.com/results?search_query=baikoen+bonsai+club)

## **Baikoen Demo Schedule – 2024**

March 21, 2024	Tom Vuong – Grafting
April 18, 2024	Bill Ward
May 16, 2024	Kaya Mooney, CBS Artist
June 20, 2024	Mitch Matsey
July 18, 2024	CBS Artist[Type here]
August, 2024	No Meeting
September 19, 2024	Robert Hoogeveen
October 17, 2024	Debra Mauzy-Melitz – Kusamomo
November 21, 2024	Elle Nieto-Brodnick, CBS Artist
December, 2024	No Meeting, Happy Holidays